

Kindness and Co-operation	Thankfulness	Friendship and Sharing	Respect	Patience and Perseverance	Responsibility
Hope and Peace	Unity	Trust and Honesty	Happiness	Courage	



**MAPLE TREE
PRIMARY SCHOOL**

Climbing the branches of success

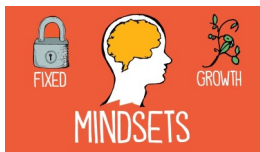
Newsletter

Friday 28th June 2019

NED SHOW

This year, a focus on our School Development Plan has been to encourage emotional resilience for all and as part of this, on Tuesday children from Key Stage 1 and 2 watched a Growth Mindset performance, with the theme of 'Never Giving Up'. They were enthralled to watch as Megan thrilled them with yo-yo skills and magic, whilst at the same time getting the message of perseverance and resilience across.

Thanks to generosity of other schools the performance was free. All we had to do was 'pay it forward', and thanks to many of you purchasing yo-yos we displayed our Values yet again. Lots of children have been telling us that they have already mastered some of the amazing tricks that can be achieved with a yo-yo!



Thank you to all who came to support the children at Sports Day. It was a lovely event and the weather was good.

Thank you to Mrs Scott for organising the day and to FoMT for selling much needed refreshment.

Well done to Robins!



Space Chase Reading Challenge

Sandy library are calling for children to sign up to read six books this summer, as part of **Space Chase** (the Summer Reading Challenge for 2019). The challenge starts on Saturday 20 July and runs until Saturday 7 September.



Please see their website for opening times.

It is a great opportunity to keep the reading motivation high over the Summer holidays!

House Point Winners

Congratulations



Attendance Award



The best attendance award is presented to:

Mulberries 94.2 % (Pre-School)	Pine (YR) 93.3 %
Fir (YR) 92.2 %	Birch (Y1) 95.5 %
Yew (Y1) 100 % ★	Aspen (Y2) 94.6 %
Poplar (Y3) 98.6 %	Rowan (Y4) 100 % ★
Juniper (Y4) 95.2 %	Cherry (Y5) 97.1 %

Be in the line by 5 to 9!



Maple Tree Primary School, Hawk Drive, Sandy, Bedfordshire, SG19 2WA

Tel: 01767 699806 email: office@mapletreprimaryschool.com

www.mapletreprimaryschool.com

Head: Mrs Cath Bainbridge

Deputy Head: Mr. Steve Venus

Community News

Governor Visit Update

One of the things I enjoy as a governor is undertaking 'Learning Walks', these enable governors to observe each classroom in action. Each visit has a particular focus. The purpose of the walk is for the governor and subject lead teacher to identify where the focus is evidenced across the key stages within the school.

My recent learning walk, as part of my role as a Link Governor for English, was to observe how oracy and discussion around text is taught. All teachers used effective, age appropriate questioning to clarify comprehension of the text. This also developed into broader discussions with the visibly engaged children. It is evident across the school how reading is part of the daily routine.

Thank you to all the teachers and children involved.

Jo Cleary - Parent Governor

Diary Dates

Summer

Saturday 6th July - Summer Fete

Thursday 11th July - Reports out

Thursday 11th July - Online Safety Parents Talk 9am

Friday 12th July - Meet the new teacher transition morning

Friday 12th July - Open Afternoon 2.30 - 3.30pm

Monday 15th July - Year 4 Camping

Friday 19th July - Term Ends

Monday 22nd July - INSET day

Autumn 2019

Monday 2nd September—INSET day

Tuesday 3rd September—INSET day

Wednesday 4th September—children return to school

Friday 6th September—Mulberries Taster day

Monday 9th September—Mulberries start school

Co-op Fundraising Update

£1,434.40 raised so far!

Date and Time

Maple Tree Kids Club Summer Activities *For enquires & bookings contact; 07950592745*

Price

Mon: 22.7.19 10am - 3pm	Multi activity day with Tash – 4 Corners Suitable outdoor clothing & footwear required. Please provide water bottle, lunch & snacks	£15
Wed: 24.7.19 10am - 12pm	Dance and Drama (Greatest Showman) with Kellie Suitable footwear required	£10
Tues: 30.7.19 2pm - 4pm	Rainbow Fitness fun and games with Amanda Whiteman Suitable footwear required	£10
Wed: 31.7.19 10am - 12pm	Trampolining with Rising Stars	£10
Fri: 2.8.19 10am - 3pm	Multi activity day with Tasha – 4 Corners Suitable outdoor clothing & footwear required. Please provide water bottle, lunch & snacks	£15
Tues: 6.8.19 10am - 12pm	Nerf gun fun with All Wrapped up Suitable footwear required	£10
Wed: 7.8.19 10am - 12pm	Trampolining with Rising Stars	£10
Thu: 8.8.19 10am - 3pm	Multi activity day with Tasha – 4 Corners Suitable outdoor clothing & footwear required. Please provide water bottle, lunch & snacks	£15
Tues: 13.8.19 10am - 12pm	Circus skills with Kellie	£10
Wed: 14.8.19 2pm - 4pm	Rainbow Fitness fun and games with Amanda Whiteman Suitable footwear required	£10