

Kindness and Co-operation	Thankfulness	Friendship and Sharing	Respect	Unity	Responsibility
Hope and Peace	Patience and Perseverance	Trust and Honesty	Happiness	Courage	



## Newsletter

Friday 6th October 2023

### MESSAGE FROM THE HEAD

This morning we had our first Parent Forum meeting of this school year and there was lots to discuss. Minutes of this meeting will be sent out to you all next week but I am grateful to the reps who have put themselves forward again to take part this year as it really strengthens the relationships between school and home.

During this meeting we discussed our Ofsted visit and how proud we are of our achievements and I hope that having read the inspection report that I sent out to you all last week you feel the same. The report is extremely positive and although it was the judgement we were hoping for this should not downplay the efforts that have gone on from staff or from the pupils who really delivered during the inspector's entire visit; the fact that the first sentence indicated the warm welcome that they gave her is testament to the kind children who attend Maple Tree - our school values are so important to us and when these are recognised, we are delighted.

We also discussed the positive results of the Parentview survey and I am grateful to those of you who took time to answer the questions. Where we feel we have not met the standards we would expect on some individual questions, we will be revisiting these in our next Parent Forum and you will be asked for further thoughts ahead of this. We also want to keep the channels of communication open this year and will be asking you for specific feedback at various points during this school year rather than waiting for later in the academic year as this will keep our responses timely.

With regards to communication, we hope that you are finding your way around the website. This has been through an extensive overhaul over the last 10 months following feedback from all stakeholders and I hope you will agree it is much easier to navigate - we have had some very positive comments to this effect from parents. If there is something you cannot find, please do ask us.

Our teachers are also at the classroom doors at the beginning and end of every day if you have any concerns regarding your child (parents of children in Yew and Aspen, please do feel free to walk through the small playground to get to the classroom door if you need to), but you may also need to make an appointment to meet with the relevant Key Stage Leader if required - for clarity: Early Years (pre-school & Reception) is Mrs Darnell, KS1 (Years 1 & 2) is Mrs Vickery-Cox and KS2 (Years 3-6) is Ms Cassidy. Appointments can be made through the school office.

Next week I will share our school priorities for this year with you but in the meantime I hope you all have a good weekend.

### Macmillan Coffee Afternoon: Thank you!

Thank you very much to everyone who donated cakes/biscuits and/or attended the Macmillan Coffee/Cake Sale last week. The total raised was **£284.05!!!**

Kind Regards, Mrs Pond & Mrs Longworth



Maple Tree Primary School, Hawk Drive, Sandy, Bedfordshire, SG19 2WA

Tel: 01767 699806 Web: [www.mapletreepriamaryschool.com](http://www.mapletreepriamaryschool.com)

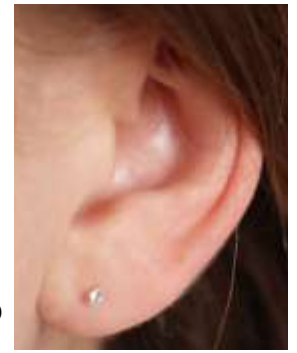
Emails: [office@mapletreepriamaryschool.com](mailto:office@mapletreepriamaryschool.com) or [teacher@mapletreepriamaryschool.com](mailto:teacher@mapletreepriamaryschool.com)

## PE and Sports Clubs Uniform Update

Please be advised that we have reviewed and updated our policy for jewellery in PE. Maple Tree prohibits the wearing of all jewellery, including earrings, in all aspects of physical activity as these could present a hazard to the wearer and to others. Pupils are encouraged to leave items of jewellery and earrings at home on days when they have physical education lessons. Children who do wear earrings to school on PE days will be expected to remove them by themselves. Staff are unable to help with this. If your child has only just had their ears pierced, and are not allowed to remove them, they must be covered. Long hair must also be tied back for all PE lessons and sports clubs.



Please note that the only jewellery allowed in general are: small studs, watches and necklaces worn for religious reasons.



There was a young  
cyclist named Ted,

Who didn't wear a helmet  
on his head,

Whilst riding real quick,

He hit a big stick,

And now he's in a  
hospital bed.



Bedfordshire Road Safety Partnership  
Working together to reduce road casualties

## Harvest Festival

Maple Tree will once again be collecting long-life food items to donate to The Need Project, our local food bank.



Please can all items be left in the box in the school office. These will form part of our display for Harvest Assembly before being collected and distributed to those in need. Please ensure all items donated are well in date. They are in need of most items but in particular: cereal, biscuits and soft drinks.

Maple Tree supports a new bill, that has been out to Parliament, proposing that cycle helmets **must** be worn to improve cyclist road safety. Please ensure your child wears a helmet when cycling to school.

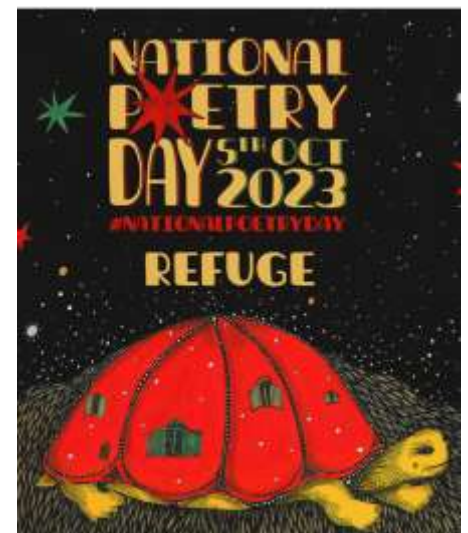
## Poetry Competition:

Write a poem about how you can find refuge (a place, a person, a feeling).

- Every entry will receive 2 house points.
- All entries will form part of the school anthology.
- Entries are welcome from all year groups including early years.

Please get all entries to Miss Hyde by **Monday 16th October 2023**.

*This was launched on National Poetry Day this week in a whole school assembly with Miss Hyde and the entries have already started coming in!*



# Online Safety Parent Evening

**Thursday 16<sup>th</sup> November 2023**  
**6:30-7:30pm**

**Join us for an evening learning about how to  
keep children safe online**

*run by a Cyber Protect & Prevent officer within the  
Cybercrime Hub in Bedfordshire Police.*

You will learn:

- how your online behaviour can impact your child,
- about the dangers of parents sharing sensitive information about their child online,
- how to keep your child safe when using popular apps and websites such as: youtube, roblox and tiktok
- and much more!

This will be run as an interactive session to get you thinking about the hidden dangers of online use. Other topics surrounding Cybercrime such as online gaming, social media interaction, sharing of indecent images and hacking are also incorporated throughout the session.

Please note, children are not able to attend this event due to the sensitive nature of some of the videos shared.





# Headteacher Awards

This week the  
awards are ...reading  
for... every day.



<b>Fir:</b> ★ Florence	<b>Yew:</b> ★ Hugo	<b>Aspen:</b> James ★
<b>Rowan:</b> ★ James	<b>Poplar:</b> ★ Maja	<b>Juniper:</b> ★ Imogen
<b>Sycamore:</b> Millie ★	<b>Elder:</b> ★ Charlie	<b>WELL DONE TO YOU ALL!</b>

This week's House Winners



Congratulations!

## DATES FOR THE DIARY

**Tuesday 17th October** Parents' Evening  
**Thursday 19th October** Parents' Evening  
**Friday 20th October 9:10am** KS2 Harvest Assembly  
 (KS1 will do the Easter assembly in the Spring Term)  
**Monday 23rd October** Half Term week  
**13th-17th November** Anti-Bullying Week  
**Thursday 16th November** Online Safety Parent  
 Workshop 6:30-7:30pm  
**Friday 17th November** Anti-Bullying Open After-  
 noon  
**29th November - 6th December** Book Fair  
**Thursday 30th November** Grandparent's Breakfast  
**Friday 8th December** Parent Forum  
**Wednesday 13th December** Christmas Dinner  
**Tuesday 19th December** Term Ends

Term dates for **2024-2025** can be found [here](#).

## Attendance Awards

Week beginning 2nd October 2023

The best attendance award is presented to:  
**Poplar class!**

<b>Mulberries</b> 95%	<b>Fir (YR)</b> 93%
<b>Yew (Y1)</b> 97%	<b>Aspen (Y2)</b> 94%
<b>Rowan (Y3)</b> 97%	<b>Poplar (Y4)</b> 98% ★
<b>Juniper (Y5)</b> 94%	<b>Elder (Y6)</b> 96%
<b>Sycamore (Y6)</b> 93%	<b>Our target is 97%</b>